




# Isolation Creation Worksheet

## A Picasso inspired portrait!

Pablo Picasso is one of the most influential artists of the 20th century. This week, your challenge is to create a Picasso inspired portrait, either of yourself (a self-portrait) or someone else. This could be a friend, family member, famous person or even a pet!

### What you could use

	<ul style="list-style-type: none"> <li>• Paper, pencils, pens</li> </ul>
	<ul style="list-style-type: none"> <li>• Paints, pastels, or anything you use to create your artwork!</li> </ul>
	<ul style="list-style-type: none"> <li>• Collage material (pictures or paper torn or cut from old magazines) glue and scissors</li> </ul>



Succession Picasso/DACS 2020

Picasso created many different kinds of art. One of his most famous styles was **Cubism**. **Cubism** is when the subject (main person or object in the painting) is shown from different perspectives in one picture. For example, straight on and from the side.

You can see in this famous Picasso painting, *The Weeping Woman* that the side of the woman's face is visible (if you cover the left side of the picture you will just see her profile) as well as the front.

*What else can you see in this painting?*



Succession Picasso/DACS 2018



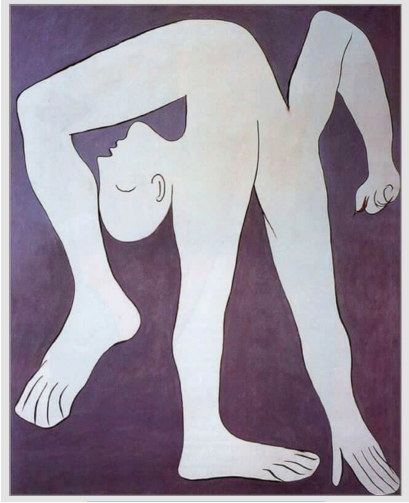
<https://artes-uk.org/tag/dora-maar/>

You could try painting a portrait using different perspectives - side and front or even back!

Like Picasso, you could experiment with the colours you use.

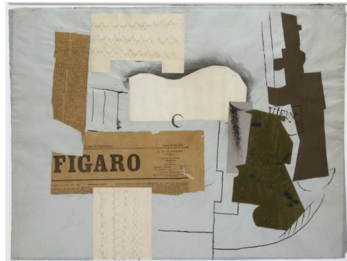
What colours will you use for the background? You could use a dark colour, like the purple background on the left, or a warm colour like the orange hues on the right.

## A Picasso inspired portrait!



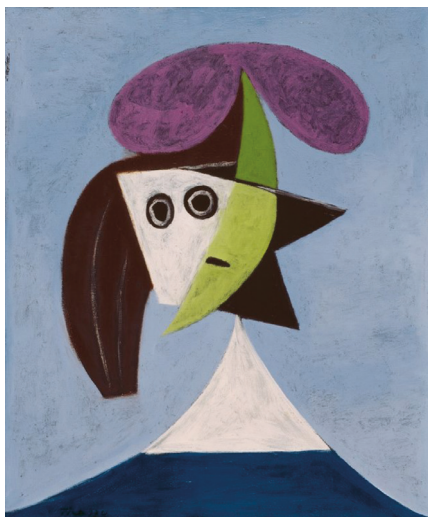
[www.PabloPicasso.org](http://www.PabloPicasso.org)

You could create a whole body portrait like this acrobat painting.



<https://www.weinerelementary.org/picasso-and-collage.html#>

Your portrait could use collage. Here are some collages by Picasso using newspaper, wallpaper, fabric and photographs.



Woman in a Hat (Olga) by Pablo Picasso, 1935. Photograph: © Succession Picasso/DACS London

You can play with shapes like Picasso - using square or rounded marks.

Most importantly, enjoy experimenting when creating your portraits! As Picasso said:  
***"To draw you must close your eyes and sing."***